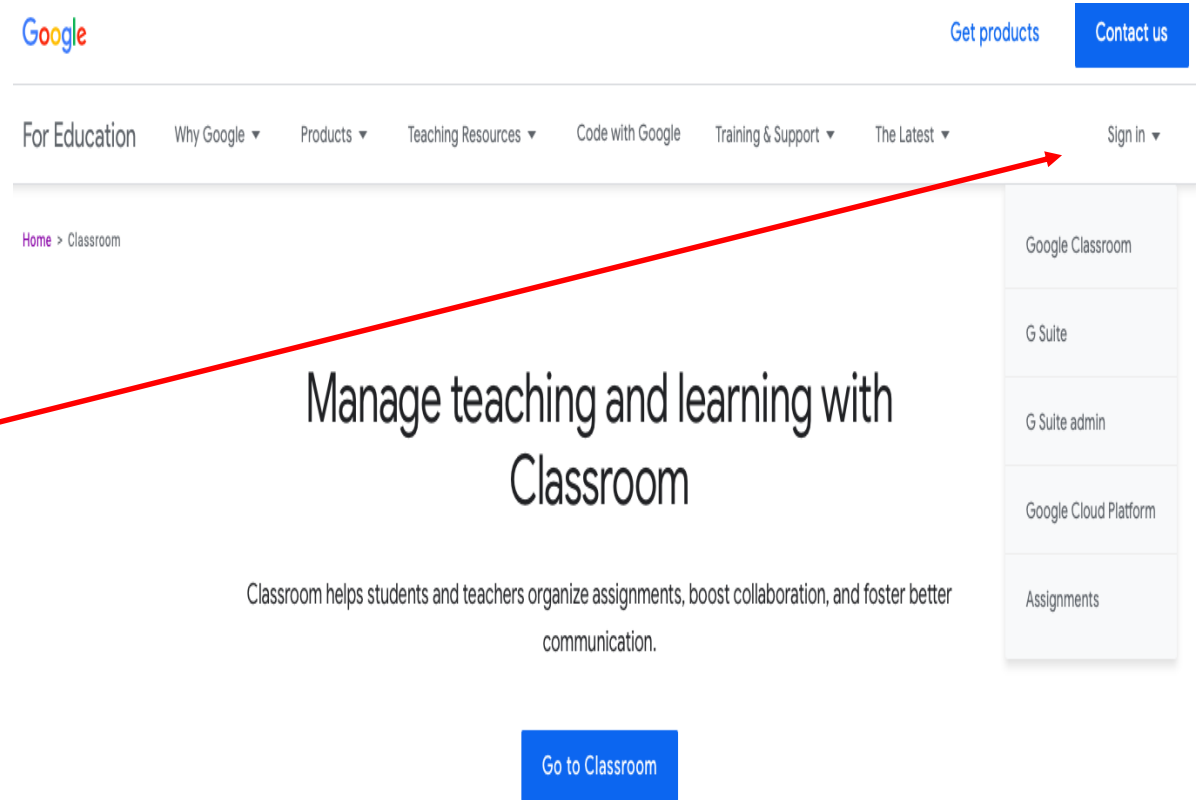
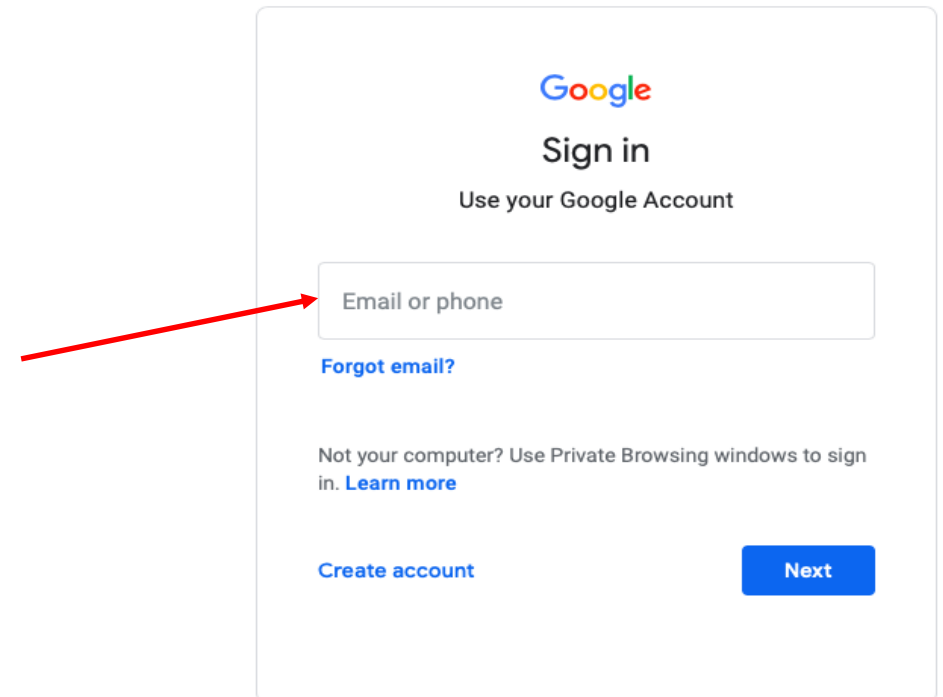
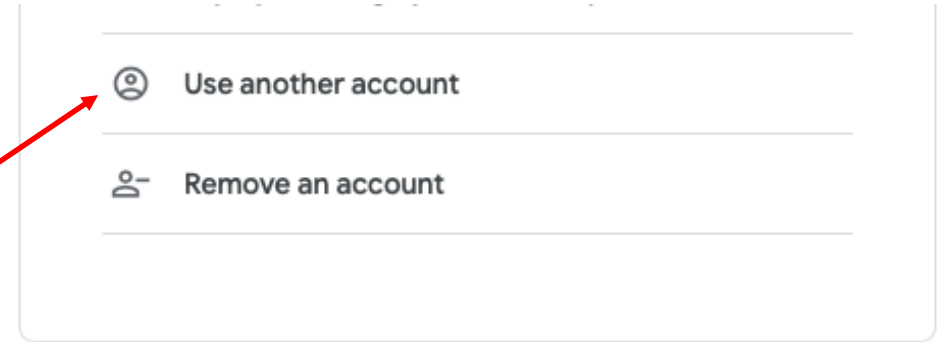


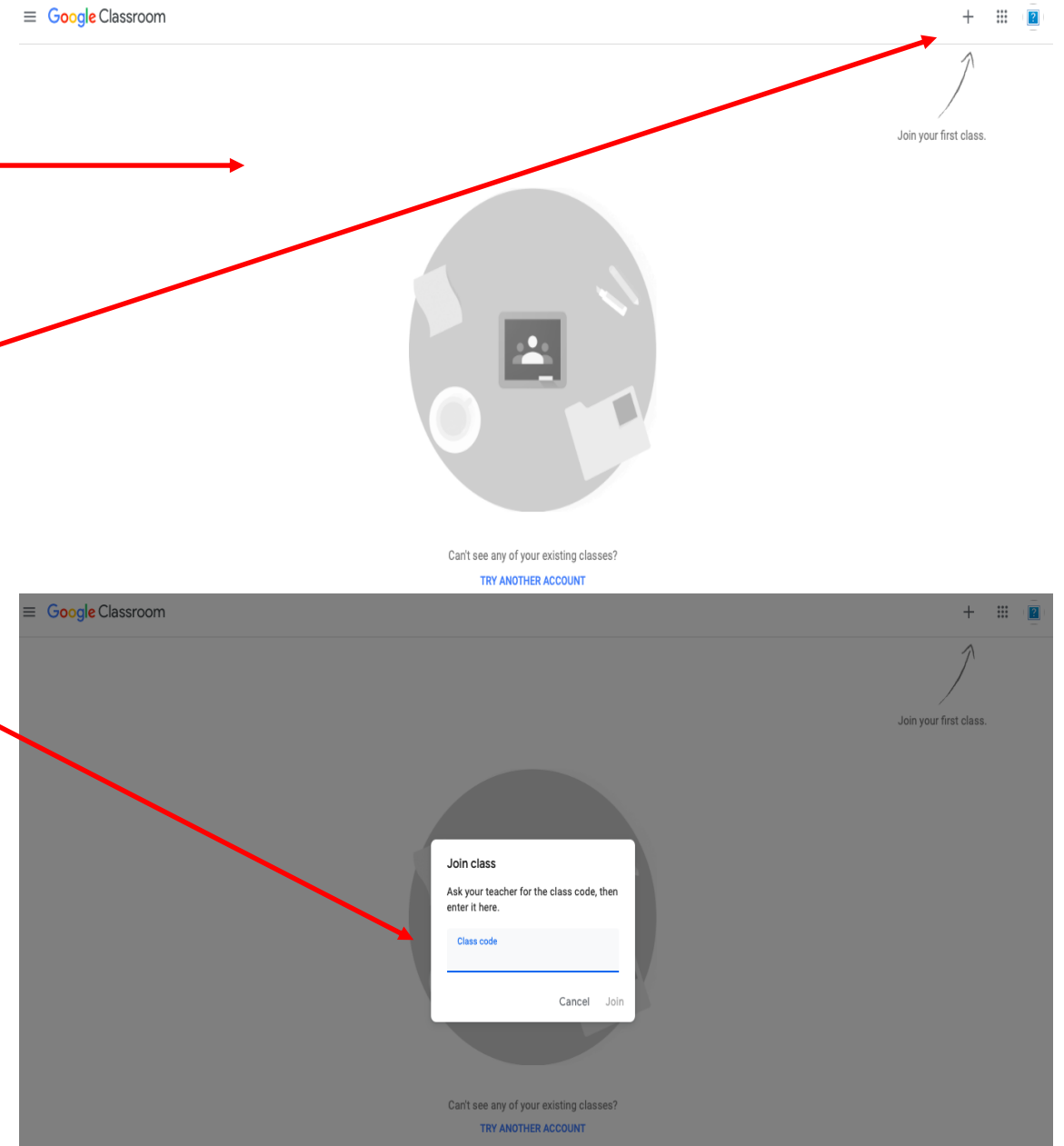
- Open Google and search for ‘Google Classrooms’
- Open the suggested page.
- Click on the sign option – choose Google Classroom if a drop down menu appears.



- A google sign-in box will appear.
- It may show existing accounts if you use Google – you will need to select us another account for school. You cannot use an existing google account.
- Your Google Classroom email will be your school login details with @hayesbrook.kent.sch.uk added after you login. For example it may look like: 17smitht@hayesbrook.kent.sch.uk
- After clicking on ‘Next’ , then enter your new password – remember you have recently changed it. **If you haven’t you must do this before completing these instructions. See the instructions set on SMHW last week.**



- You should now be inside Google Classroom – it should look like this.
- Click on the plus sign in the top right hand corner – it may say ‘Join your first class’.
- It will then ask you for the class code – use the list of class codes on the following side to join the classes you have lessons in. This should be Maths, English, Science and the Option subjects you have chosen.



Class Codes: Please use the codes below to join the classes you are currently taught.

Maths: hdpt22v

English: aowlyot

Sport: gx6ycs2

History: perz4ku

Geography: yizl6lw

Business Studies: xsif7m6

Computer Science: qrikltl