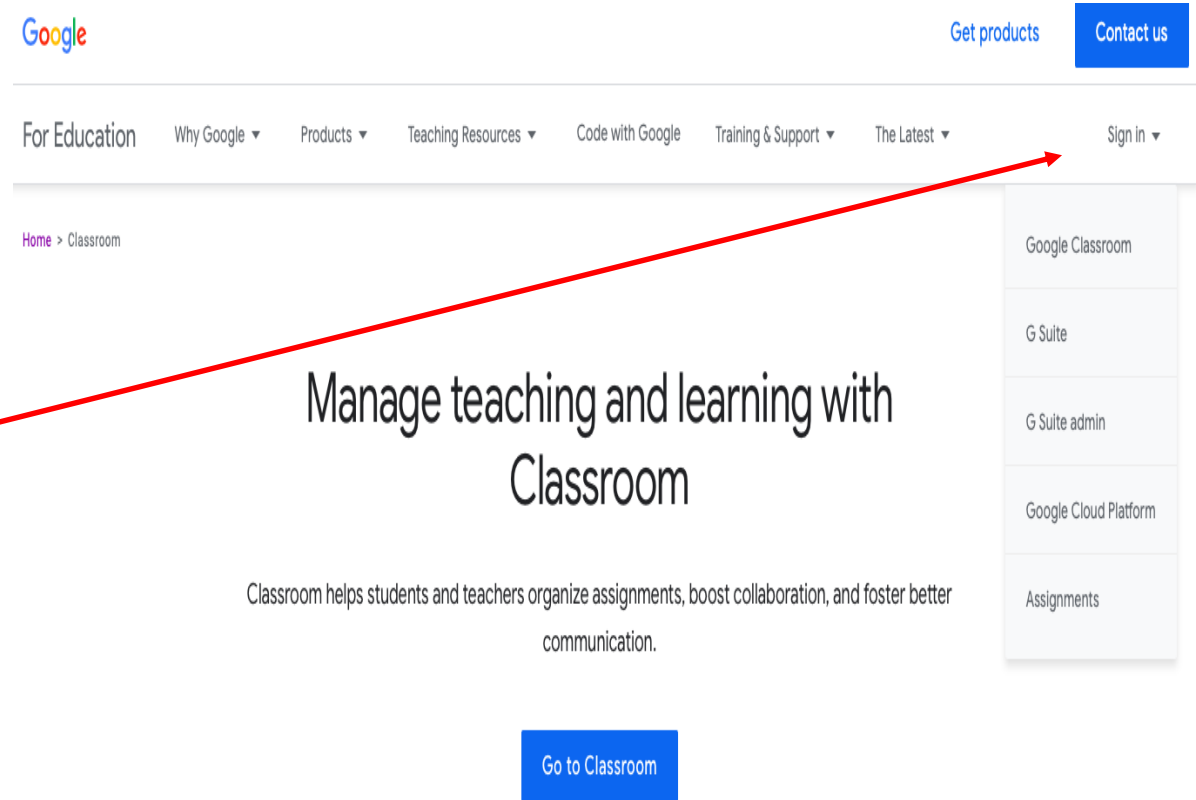
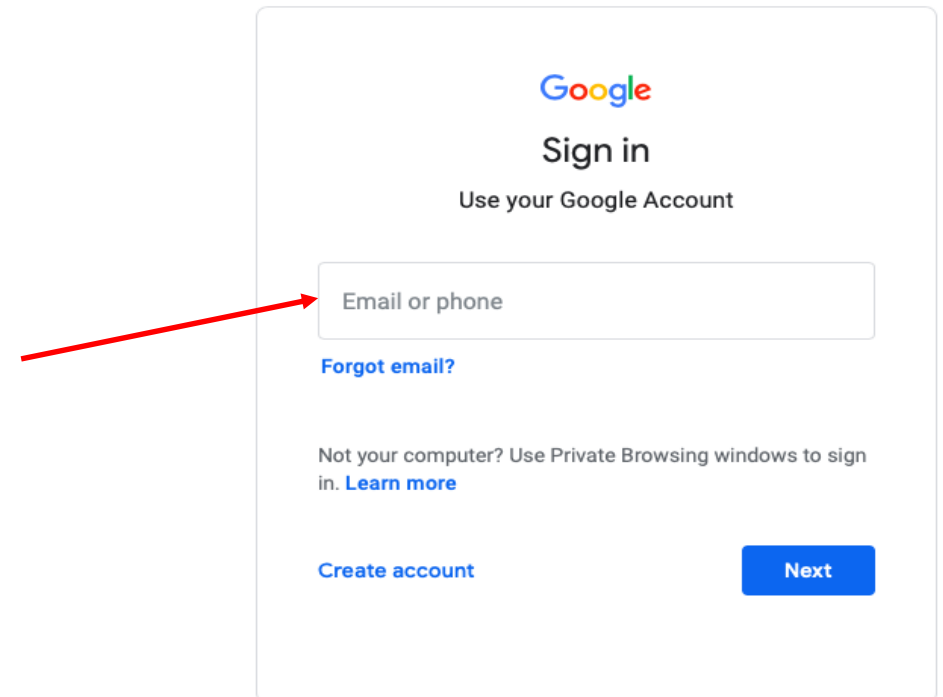
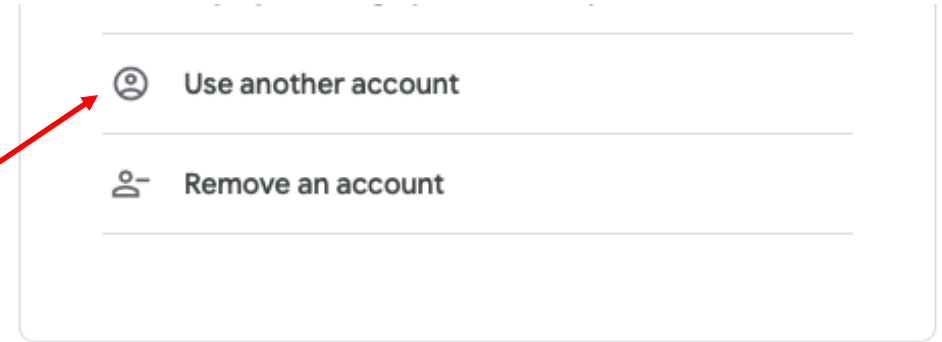


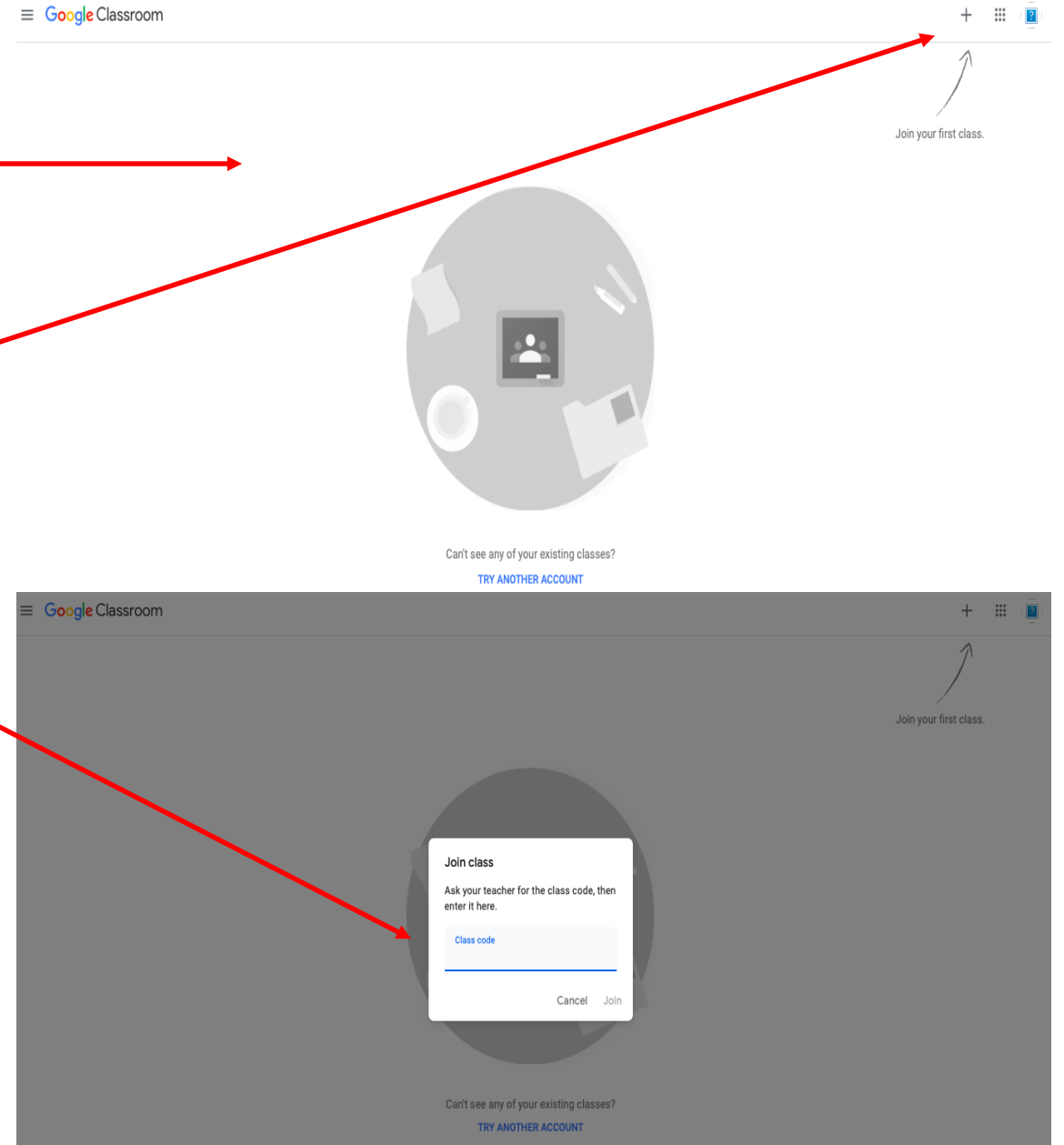
- Open Google and search for ‘Google Classrooms’
- Open the suggested page.
- Click on the sign option – choose Google Classroom if a drop down menu appears.



- A google sign-in box will appear.
- It may show existing accounts if you use Google – you will need to select us another account for school. You cannot use an existing google account.
- Your Google Classroom email will be your school login details with @hayesbrook.kent.sch.uk added after you login. For example it may look like: 17smitht@hayesbrook.kent.sch.uk
- After clicking on ‘Next’ , then enter your new password – remember you have recently changed it. **If you haven’t you must do this before completing these instructions. See the instructions set on SMHW last week.**



- You should now be inside Google Classroom – it should look like this.
- Click on the plus sign in the top right hand corner – it may say ‘Join your first class’.
- It will then ask you for the class code – use the list of class codes on the following side to join the classes you have lessons in. This should be Maths, English, Science and the Option subjects you have chosen.



Class Codes: All Pupils to join Maths, English and Science. Then only join the remaining classes that you study.

Maths: 4pnxrpi

English: hg63g4f

Science: sfewjlw

BTEC Sport: bh4ahig

French: 3722ct2

History: 3m5glnt

Geography: w4c3om7

BTEC Business: hobfdq6

Technology: d2lsptq

Art: ixdq6tg

Computer Science: fz2b3hu

Music: hp6ffl7